

Tension Fabric Accessory - TFA-CHIPWALL-02

TFA-CHIPWALL-02

Tension Fabric Chip-Shaped Wall is a potato chip shaped structure stands 8' tall and is 9' 3" wide. It is an ideal structure to create a semi-private conference/ meeting area or projection wall within a space.



features and benefits:

- Easy to store and ship
- Quick to set up
- Weighted feet for added stability
- Lifetime limited hardware warranty against manufacturer defects

dimensions:

Hardware

Graphic

Assembled unit:

112.47" w x 76.11" h x 83.7" d
2856mm(w) x 1933mm(h) x 2125mm(d)

Refer to related graphic template for more information.

Approximate weight:

42 lbs / 20 kgs

Shipping

Packing case(s):

1 OCE Case

Shipping dimensions:

OCE: Expandable case length (l) may vary
40" - 66" l x 18" w x 18" h
1016mm-1677mm(l) x 458mm(w) x 458mm(h)

Approximate total shipping weight

(includes cases & graphics):
61 lbs / 28 kgs

additional information:

Graphic material:

dye-sublimation zipper pillowcase fabric

Included In Your Kit

Tools, Components,
& Connectors



ALLEN KEY SET x1



ES30 x14

Graphics



CHIP-WALL-02-G x1

Included In Your Kit

Tubes



CHIP-WALL-02-T1 x1



CHIP-WALL-02-T2 x1



CHIP-WALL-02-T3 x1



CHIP-WALL-02-T4 x1



CHIP-WALL-02-T5 x1



CHIP-WALL-02-T6 x3



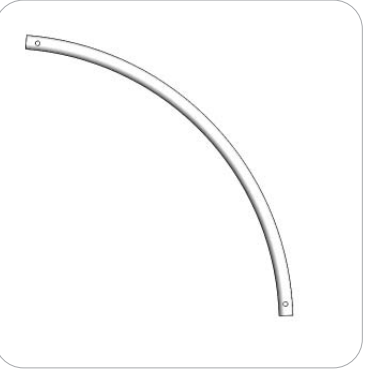
CHIP-WALL-02-T7 x1



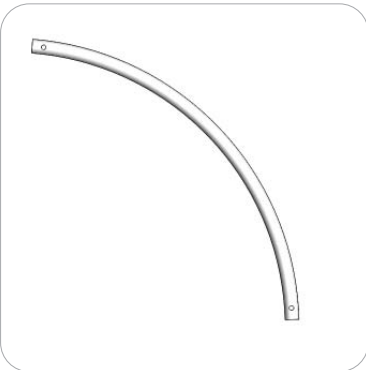
CHIP-WALL-02-T8 x1



CHIP-WALL-02-T9 x1



CHIP-WALL-02-T10 x1



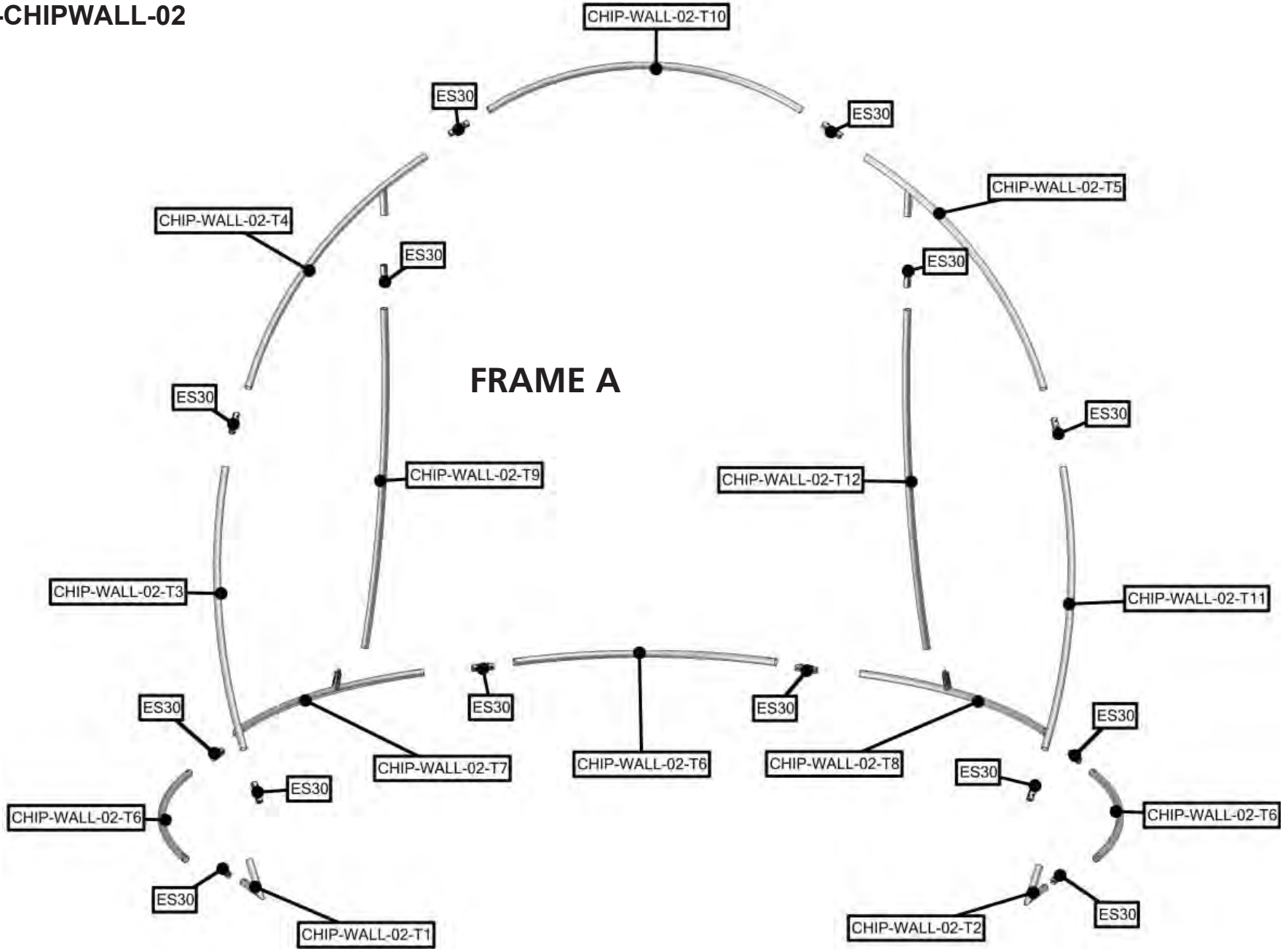
CHIP-WALL-02-T11 x1



CHIP-WALL-02-T12 x1

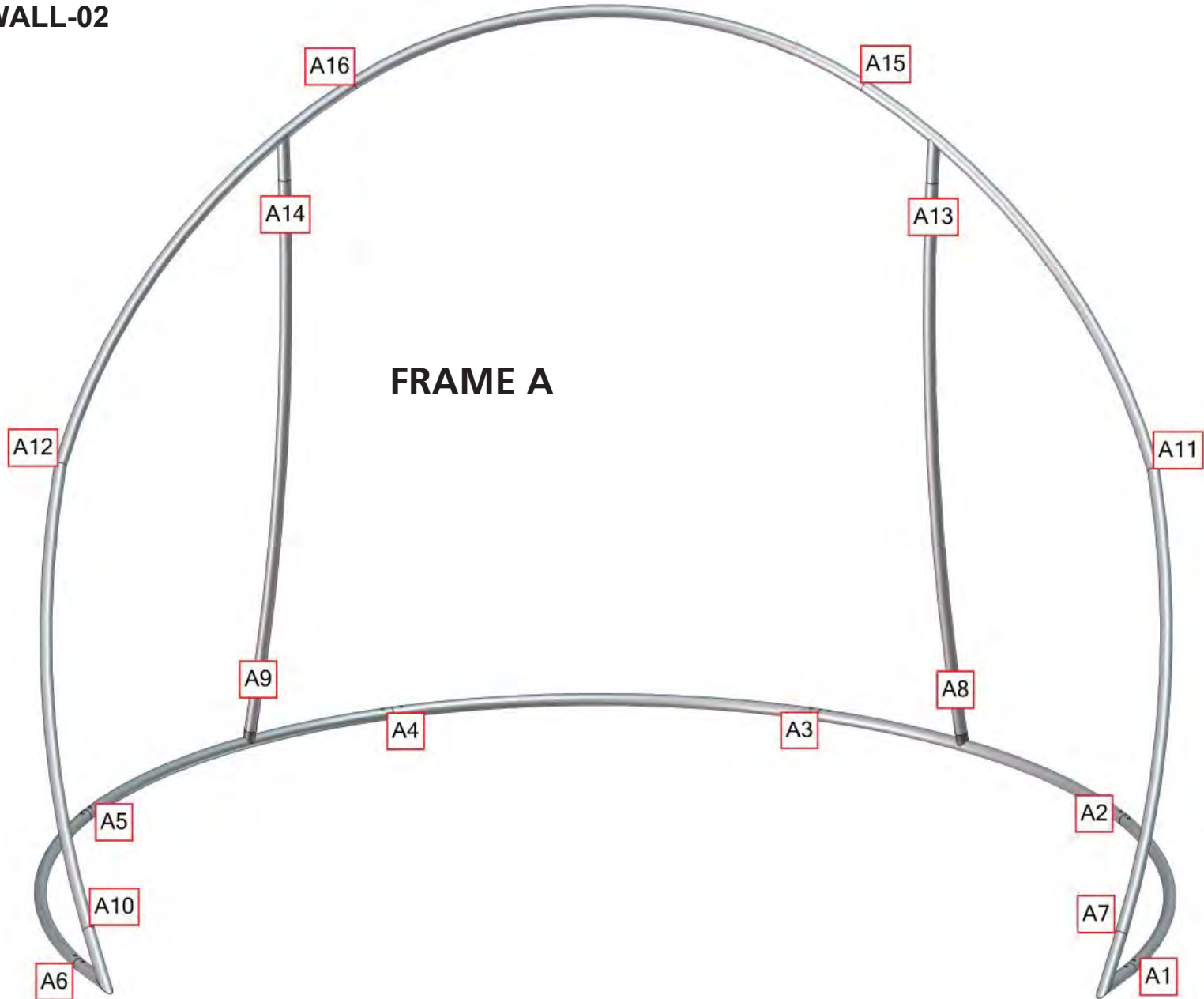
Exploded View

TFA-CHIPWALL-02



Labeling Diagram

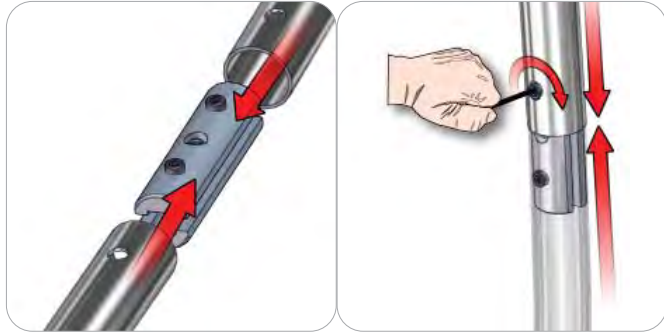
TFA-CHIPWALL-02



Connection Methods

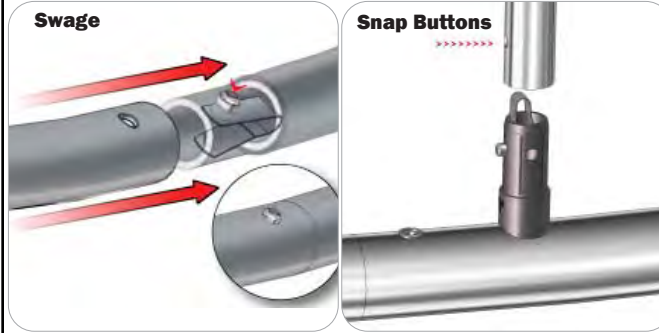
Tension Fabric structures use a number of different yet simple connection methods. Your kit will include one or more of the connection methods shown below. Steps within the Kit Assembly will reference a specific method for each connection point.

Connection Method 1: ES30 / ES50 / ES75



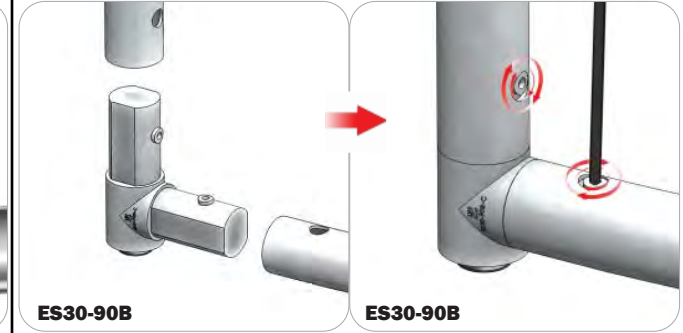
Compress the unlocked connector and slide one tube onto each end. Lock both screws carefully using your allen key tool. Be sure to lock securely, but do not overtighten.

Connection Method 2: Snap Buttons & Swage



Locate the snap button on the connector or swage tube. Locate the hole on the corresponding tube. Press the snap button with your thumb and slide the tube and connector together so that the snap button snaps fully into the lock hole. To disassemble, press the snap button and pull apart.

Connection Method 3: ES30-90B / ES30-I / ES30-C



Compress one unlocked end of the connector and slide it through one tube end. Compress the other end of the connector and slide the second tube on. Lock both screws carefully using your allen key tool. Be sure to lock securely, but do not overtighten.

Connection Method 4: Tube Clamps



Be sure to fully assemble all frames before using clamps. With the clamp unlocked, place one tube of the first frame into the mouth of the clamp. Place the second tube (if applicable) into the second mouth of the clamp. With both frame's tubes in the clamp, be sure to lock securely, but do not overtighten.

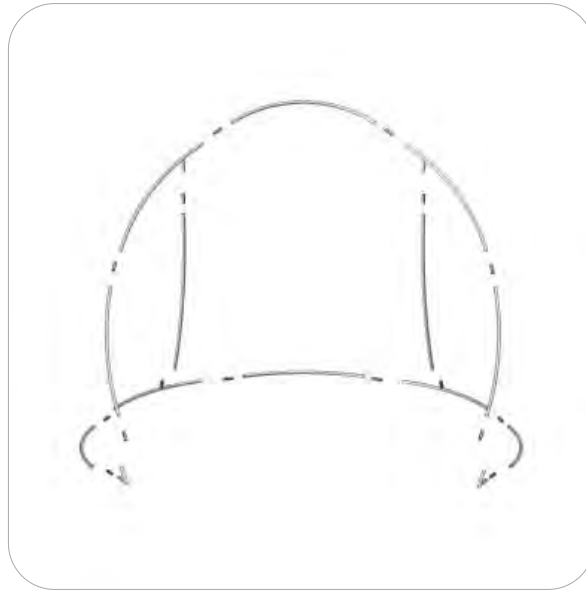
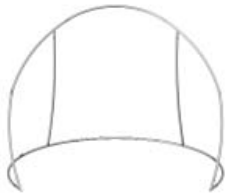
Kit Assembly

Step by Step

Step 1.

Locate the components necessary for assembling your Chip Wall. Assemble your frame in order according to the Labeling Diagram.

Please reference Connection Methods 1 & 2 for more details.



Step 2.

Apply graphic to Chip Wall. For ease of installation, pull the fabric cover over the top of the frame while the frame rests flat on the floor. Zip to enclose.

