

FabLite Tension Fabric FL-TF-20-03 Serpentine Curve

FL-TF-20-03

FabLite is a collection of sophisticated, ergonomically designed exhibit booths. FabLite combines state-of-the-art zipper pillowcase dye-sublimated fabric coverings with advanced lightweight aluminum structures to provide unique design, functionality and style. The excellence of the Formulate line of displays, hanging structures and products is simply unmatched. Stretch fabric graphics are hand-sewn, durable and dry-cleanable.



features and benefits:

- State-of-the-art 50mm aluminum tubing with heavy duty internal spigot connectors
- Easy to store and ship
- Quick to set up
- Kit includes: one frame, one dye-sublimated zipper pillowcase graphic, and two wheeled molded storage cases
- Lifetime hardware warranty against manufacturer defects

dimensions:

Hardware

Graphic

Assembled unit:
227" w x 92" h x 36" d
5766mm(w) x 2337mm(h) x 915mm(d)

Refer to related graphic template for more

Approximate weight:
62 lbs / 29 kgs

Shipping

additional information:

Packing case(s):
2 OCL

Graphic material:
Dye-sublimated zipper pillowcase fabric

Shipping dimensions:
56" l x 19" h x 19" d
1422mm(l) x 483(h) x 483mm(d)

Optional accessories:
Lumina 8-50 watt halogen lighting,
literature pocket, stand-off literature rack,
stand-off graphic shelf, graphic header,
larger freight cases

Approximate shipping weight:
104 lbs / 47 kgs

When included in a larger kit, a different packaging solution will be listed to accommodate all contents of the kit. Individual packaging no longer provided.

2 person assembly recommended:



Included In Your Kit

Tools, Components, Connectors & Tubes



5MM ALLEN-TOOL x1



ES50-2W x4



ES50 x10



TC-30-S x3



WSC20-T1 x4



WSC20-T2 x2



WSC20-T3 x4



WSC20-T3-HL x2



WSC20-T3-HR x2



WSC20-T4 x6

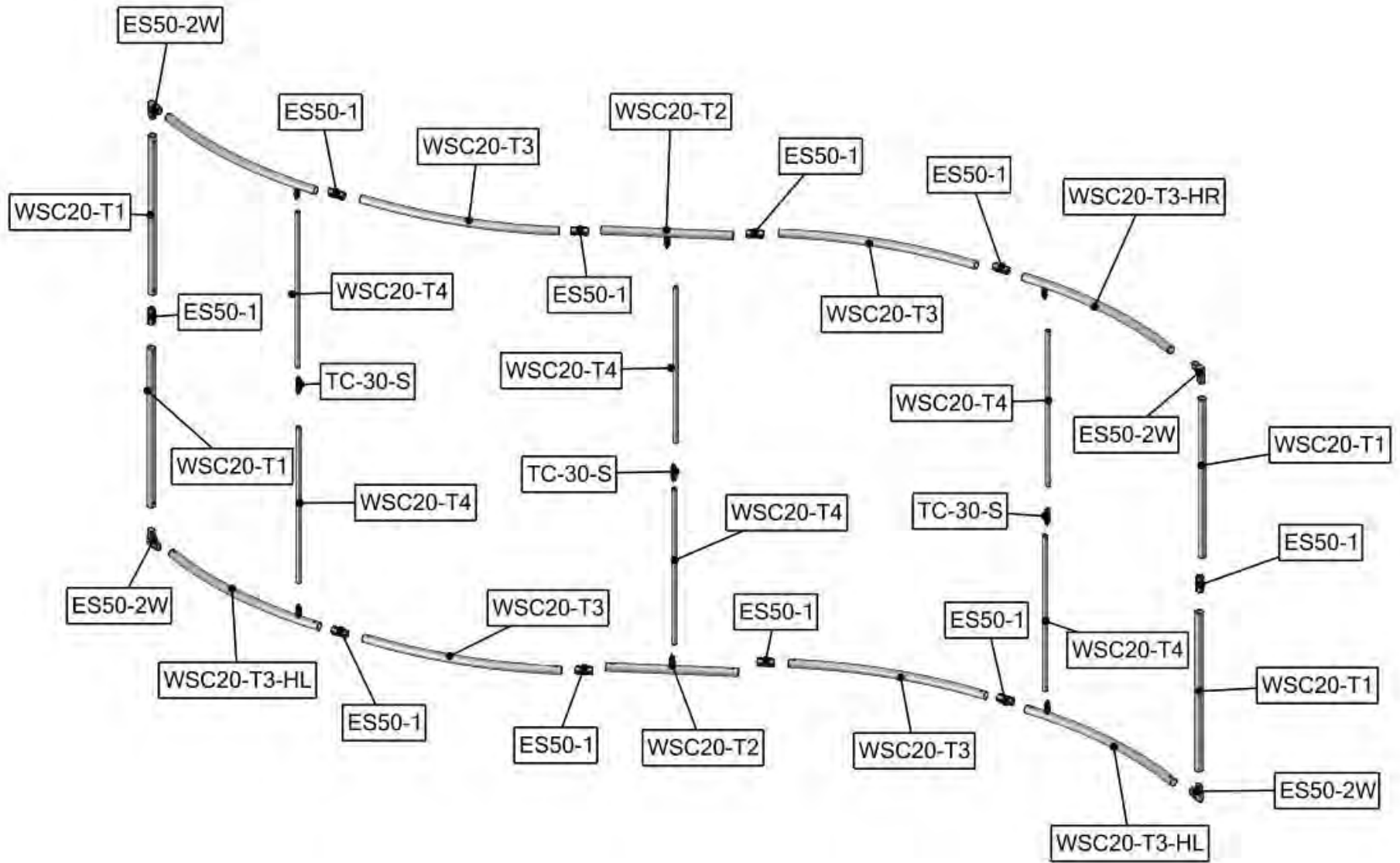
Graphics



FMLT-WSC20-01-G x1

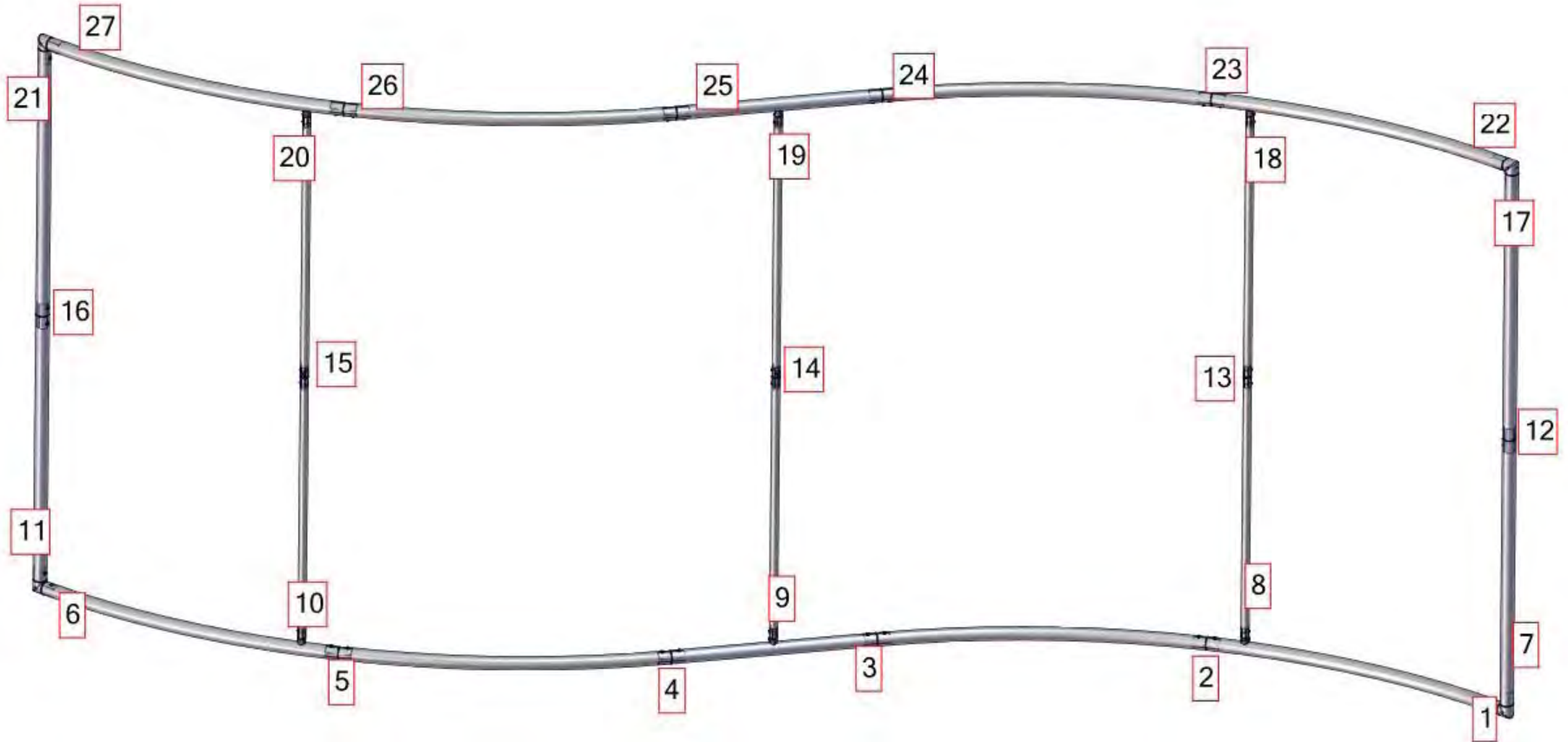
Exploded View

FL-TF-20-03



Labeling Diagram

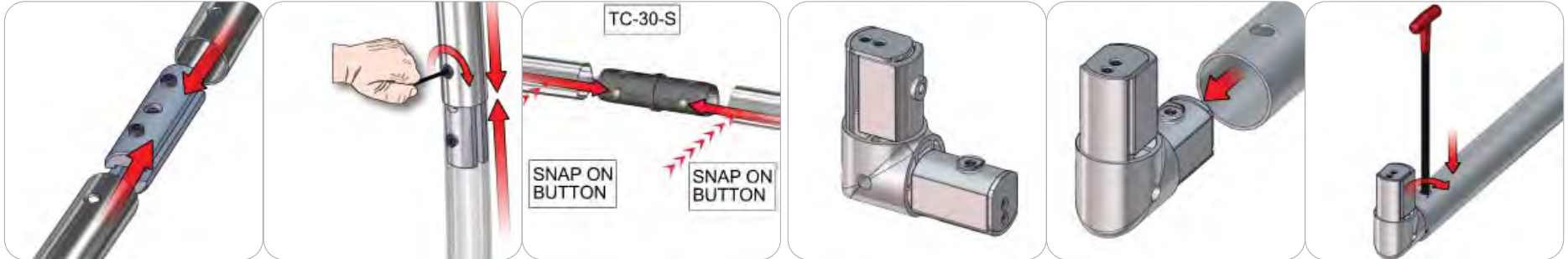
FL-TF-20-03



Connection Methods

Connection Method 1: ES30 / ES50 / SNAP BUTTONS

Connection Method 2: ES50-2W



For spigot connections, compress the unlocked connector and slide into the tube lock access hole. Lock both screws carefully using your allen key tool. Be sure to lock securely, but do not over tighten. For snap button connections, locate the snap button on the connector or swage tube. Locate the hole on the corresponding tube. Press the snap button with your thumb and slide the tube and connector together so that the snap button snaps fully into the lock hole. To disassemble, press the snap button and pull apart.

First, check if the connector ends compress. If they do not compress, use the allen key tool for turning the internal screw counter clockwise. Second, compress the connector end and slide it into the tube. Align the connector end button with the tube hole until it pops out. Third, use the allen key tool for turning the internal screw clockwise for a secure fit. Be sure to lock securely, but do not overtighten.

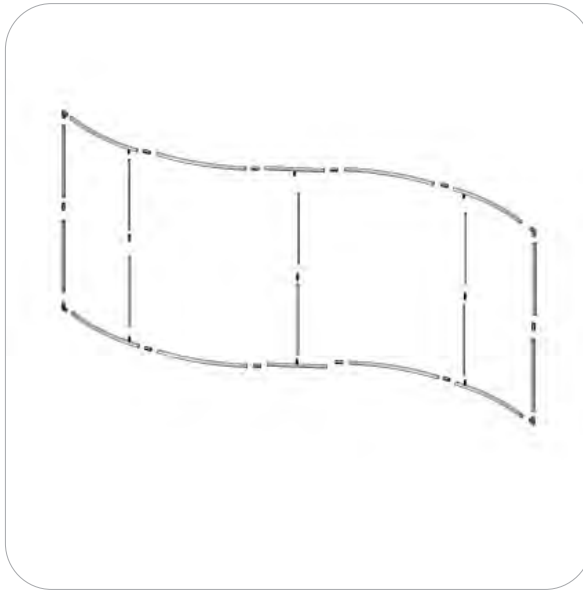
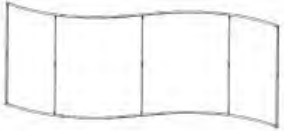
Kit Assembly

Step by Step

Step 1.

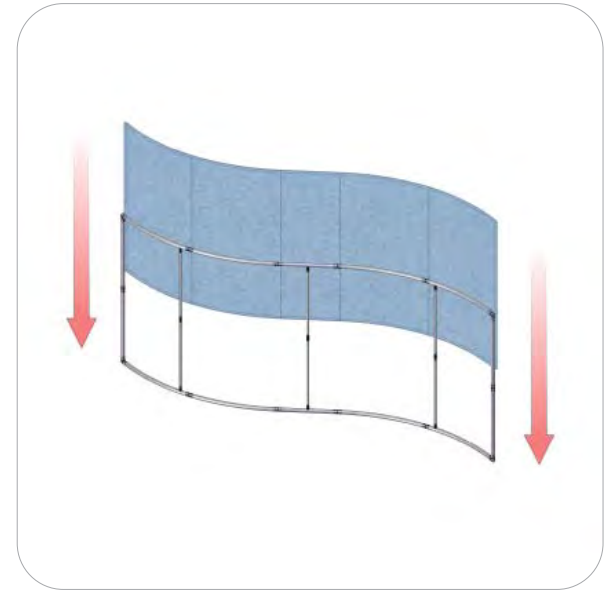
Gather the components laid out on the floor to build the frame. Use the Exploded View and the Labeling Diagram for part labels.

Reference Connection Method(s) 1 and 2 for more details.



Step 2.

With the frame laid out on the floor, apply the graphic pillowcases over the frame from the top and then zipper around the bottom edge. Stand the unit upright.



Step 3.

Setup is complete.

