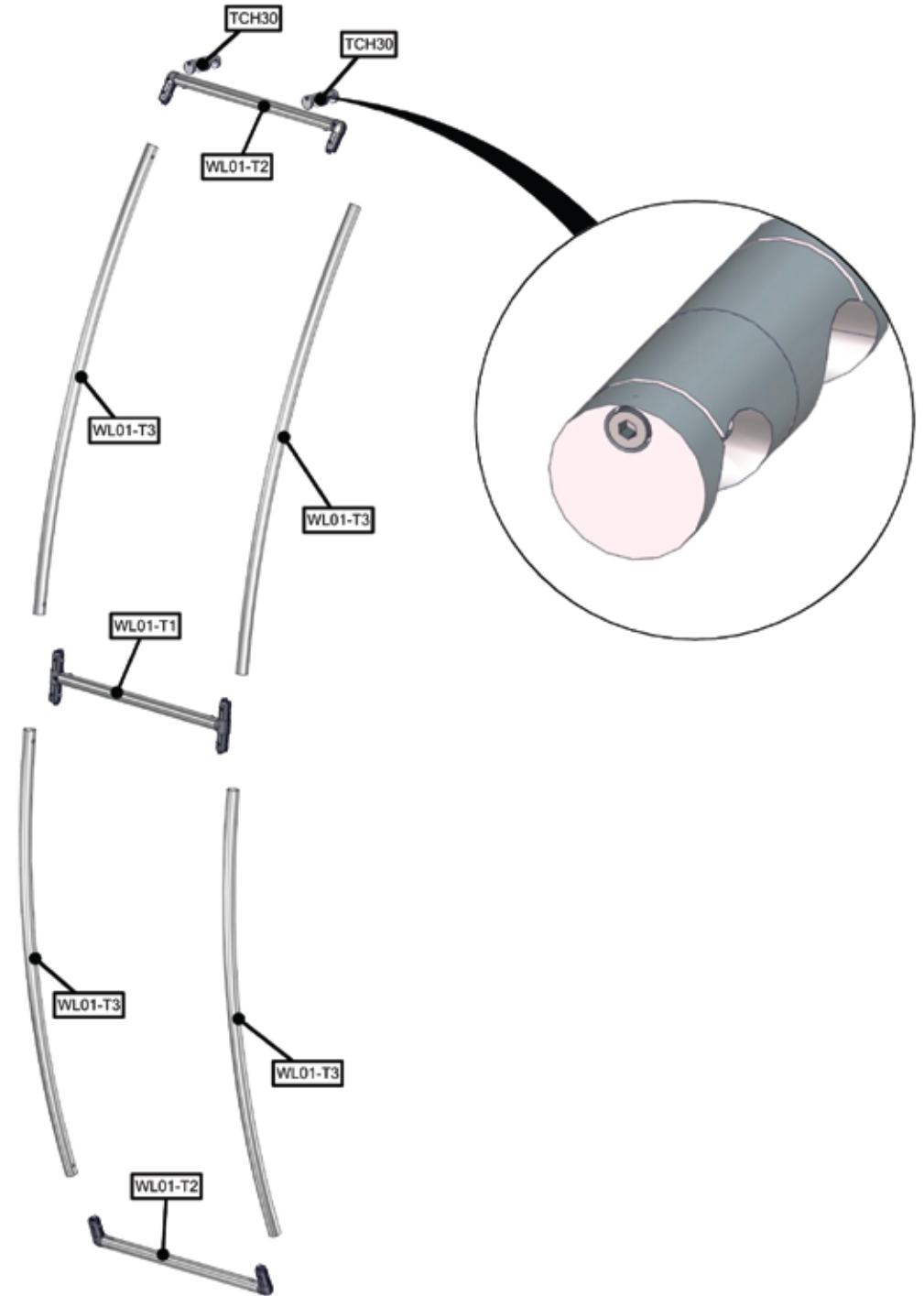
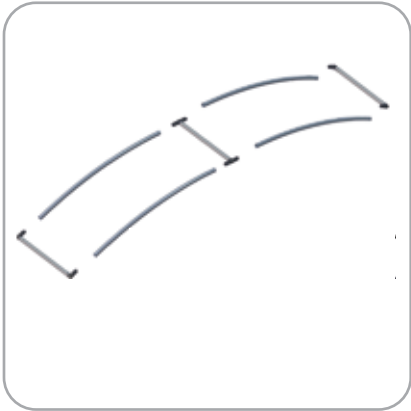


Parts Included – Ladder

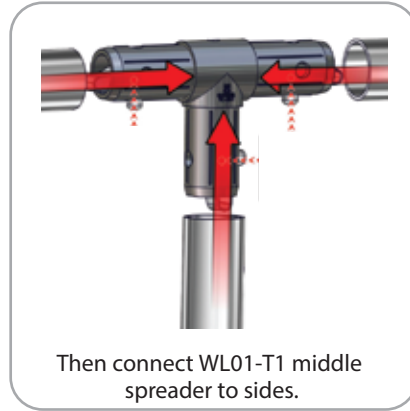
Part Label	Qty	Part Code
FABRIC PILLOWCASE GRAPHIC	x1	WL01-G
BACKWALL CONNECT WITH (2) TCH30 BACK TO BACK	x2	TCH30
535MM X 30MM TUBE WITH PART TC-30-T BOTH ENDS	x1	WL01-T1
535MM X 30MM TUBE WITH (2) TC-30-90T	x2	WL01-T2
R2000MM X 30MM TUBE (97MM ARC)	x4	WL01-T3



STEP 1: ASSEMBLE
LADDER FRAME

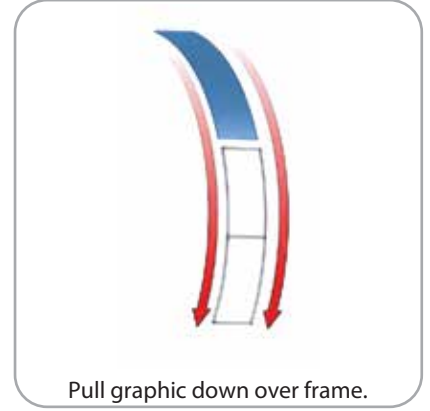


Connect bottom and top tubes to side tubes following the labels.



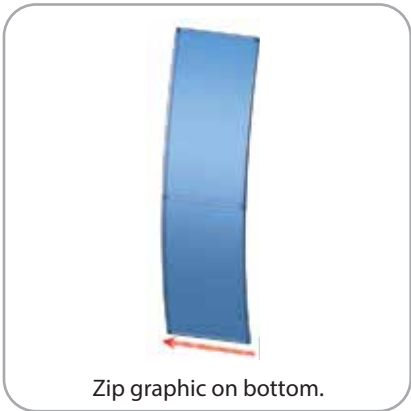
Then connect WL01-T1 middle spreader to sides.

STEP 2: ATTACH GRAPHIC

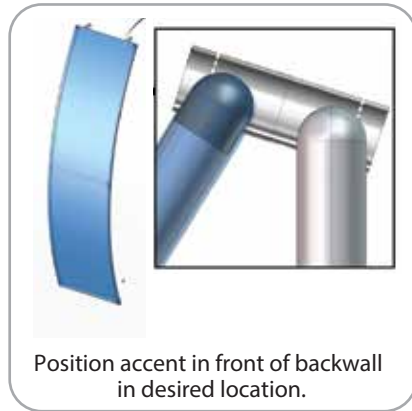


Pull graphic down over frame.

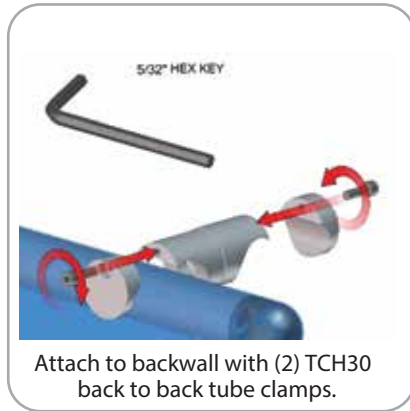
STEP 3: ATTACH TO
BACKWALL WITH CLAMPS



Zip graphic on bottom.



Position accent in front of backwall in desired location.



Attach to backwall with (2) TCH30 back to back tube clamps.



Unit is complete.